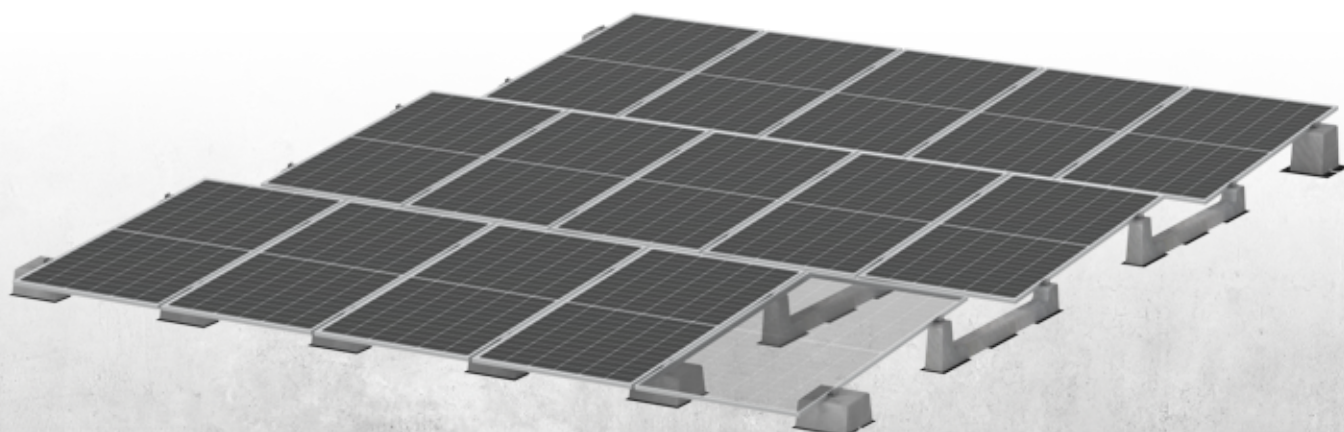


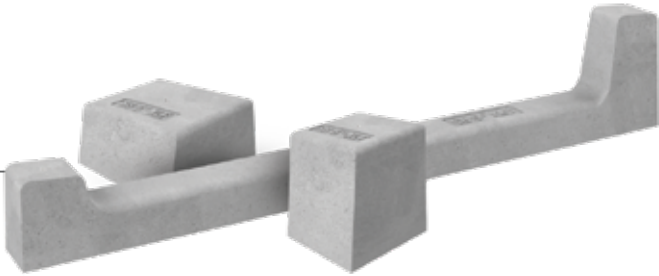
Technical Sheet **Industrial-XL 5°**

ART.23005.XLF/.XLC/.XLT



INDUSTRIAL-XL 5°

ART. 23005.XLF/.XLC/.XLT

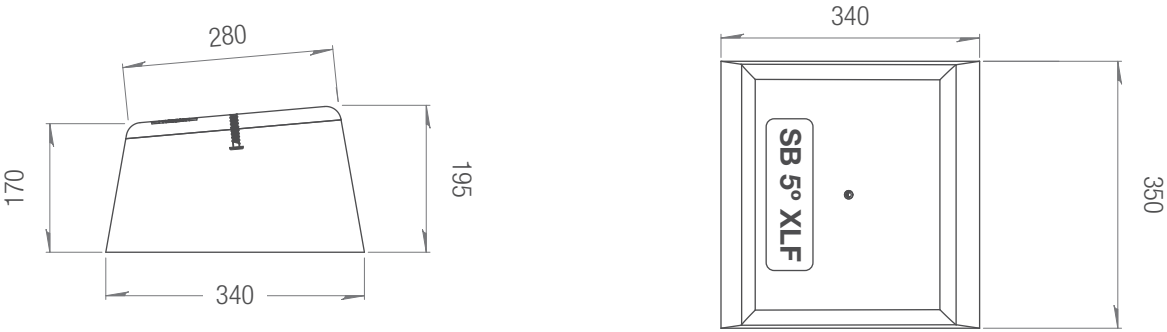


Designed for large-size panels used in large-scale PV plants, the Industrial-XL system ensures the highest level of safety and reliability. Its special reticular configuration with vertical mounting at a 5° tilt guarantees maximum wind resistance and compliance with all support parameters, while simultaneously reducing both the cost per kW and the roof loads.

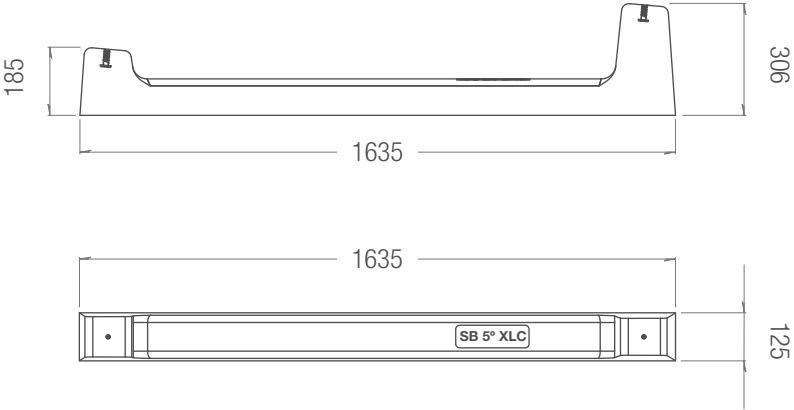
Tilt angle	5°
Module positioning	Vertical - Long Side
Compatible accessories	Sheathing (KGN23138), Universal clamps (K23900/U.50, K23920/U.50), PowerClamp (K23900/PWC.50, 23920/PWC), U-Block (23015.CRP - 23030.CRP)

BALLAST ART. 23005.XLF			
Ballast weight	45 kg	Pallet dimensions	1400x1080x333h mm
Quantity per pallet	12 pieces	Pallet weight	558 kg
BALLAST ART. 23005.XLC			
Ballast weight	56 kg	Pallet dimensions	1643x670x651h mm
Quantity per pallet	10 pieces	Pallet weight	563 kg
BALLAST ART. 23005.XLT			
Ballast weight	45 kg	Pallet dimensions	1213x768x453h mm
Quantity per pallet	12 pieces	Pallet weight	553 kg

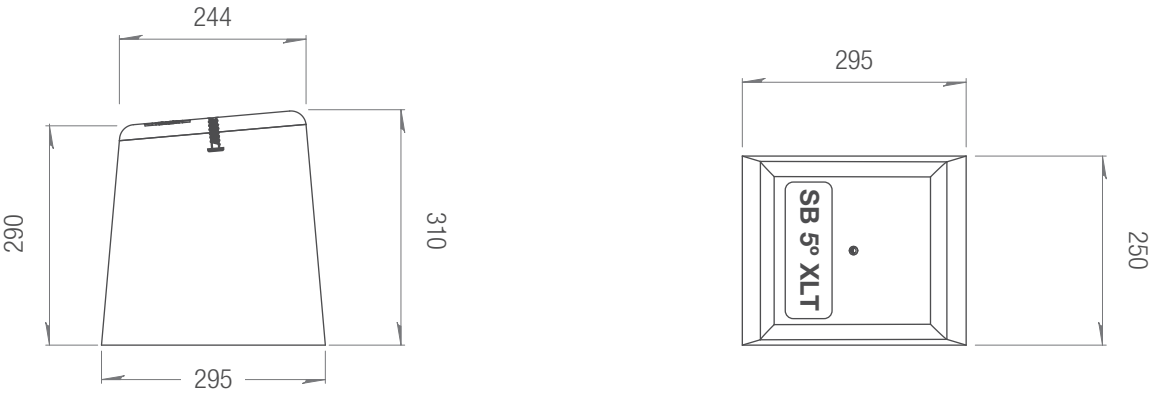
BALLAST 23005.XLF DIMENSIONS



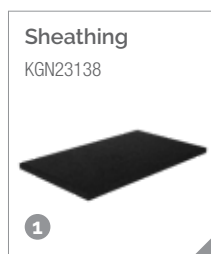
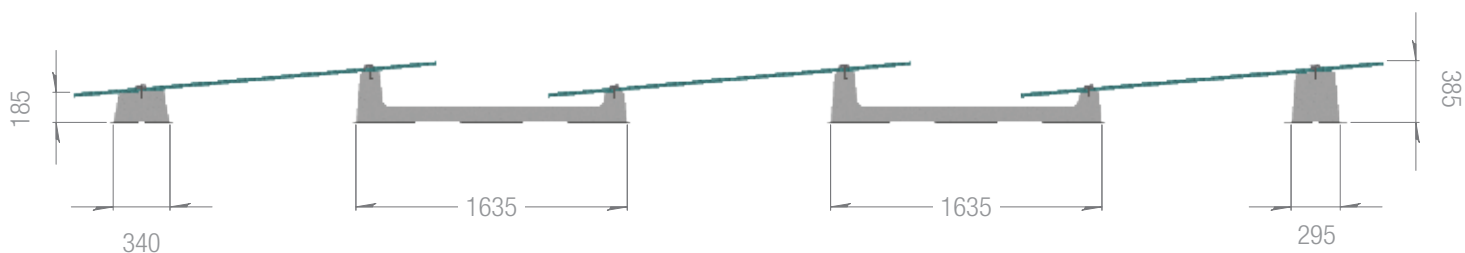
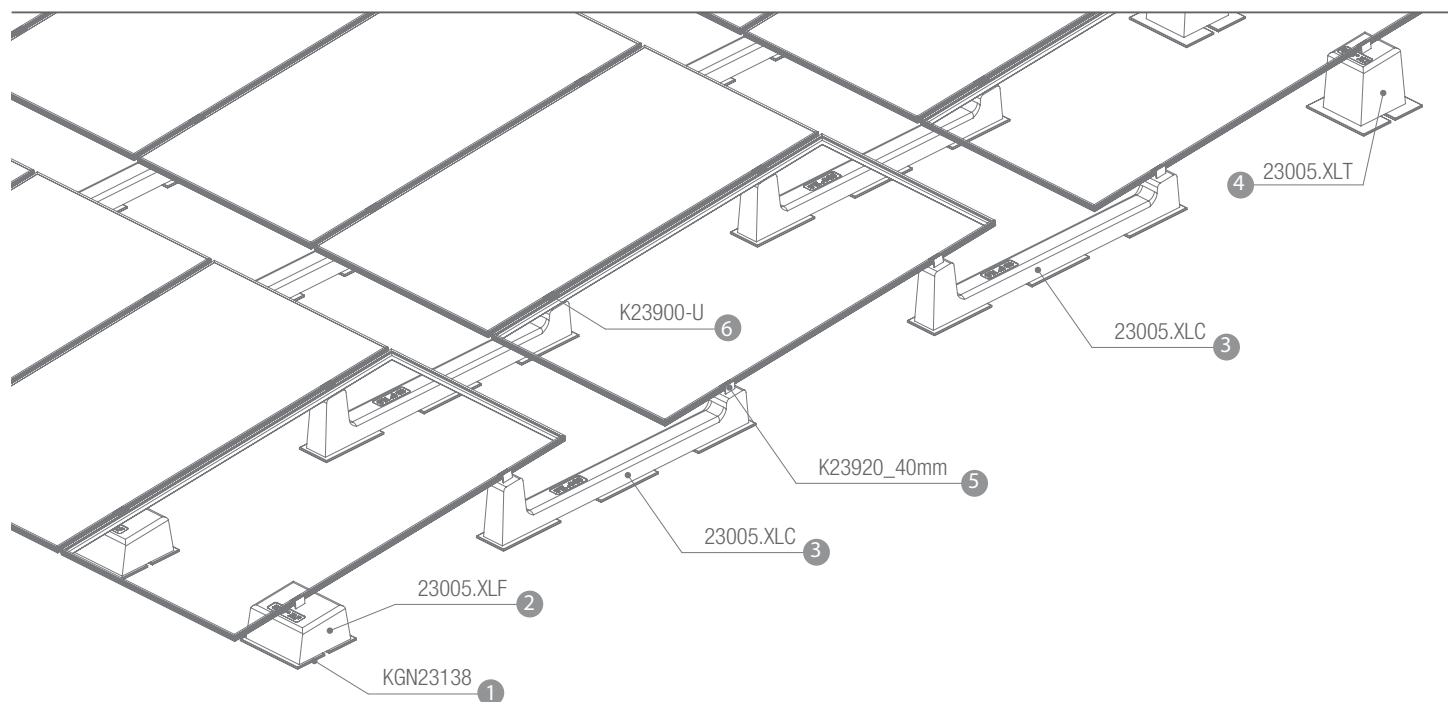
BALLAST 23005.XLC DIMENSIONS



BALLAST 23005.XLT DIMENSIONS



VERTICAL MODULE INSTALLATION - Long Side



INFO

The distance between the rows is indicative and not binding; it may vary depending on the project.

The measurements are based on the use of a panel with dimensions of 2278mm x 1134mm x 35mm. They vary depending on the size of the panel used.

Follow Sun Ballast®'s assembly instructions.

The dimensions shown in the figure are all expressed in millimeters.

TECHNICAL CHARACTERISTICS

Description:

Precast unreinforced concrete ballast.
(Inside, there is an iron rod to increase mechanical flexibility)

- Exposure class: XC4;
- Strength class: C32/40;
- Minimum cement content: 340 kg/m³;
- Fire resistance class: Class 0 (Italian class) A1 (European class with ref. UNI EN 13501-1:2019);
- Maximum H₂O penetration depth under pressure 500 kPa: 15 mm;
- Maximum H₂O penetration depth under pressure 500 kPa: 15 mm;
- Weight tolerance: $\pm 5\%$;
- Measurement: ± 5 mm;
- Determination of pullout force of M8 threaded insert embedded in CLS element by direct pulling of M8 threaded bar screwed into it.

Results of the tensile test at 15 KN (1530 kg):

No slipping of the threaded insert;

Fracture of the threaded bar.

BASIC S.R.L Benefit Corporation, in the person of its legal representative, declares that production complies with UNI EN 206 and UNI 11104 standards, instructions, and procedures of the quality management system by UNI EN ISO 9001:2015 with TUV certification.

Any modification made to the product referred to in this declaration without the manufacturer's authorization voids this declaration of technical requirements. The technical characteristics of the product are listed below.





Made to last
Patented systems

CONTACTS

INFORMATION AND FIRST CONTACT

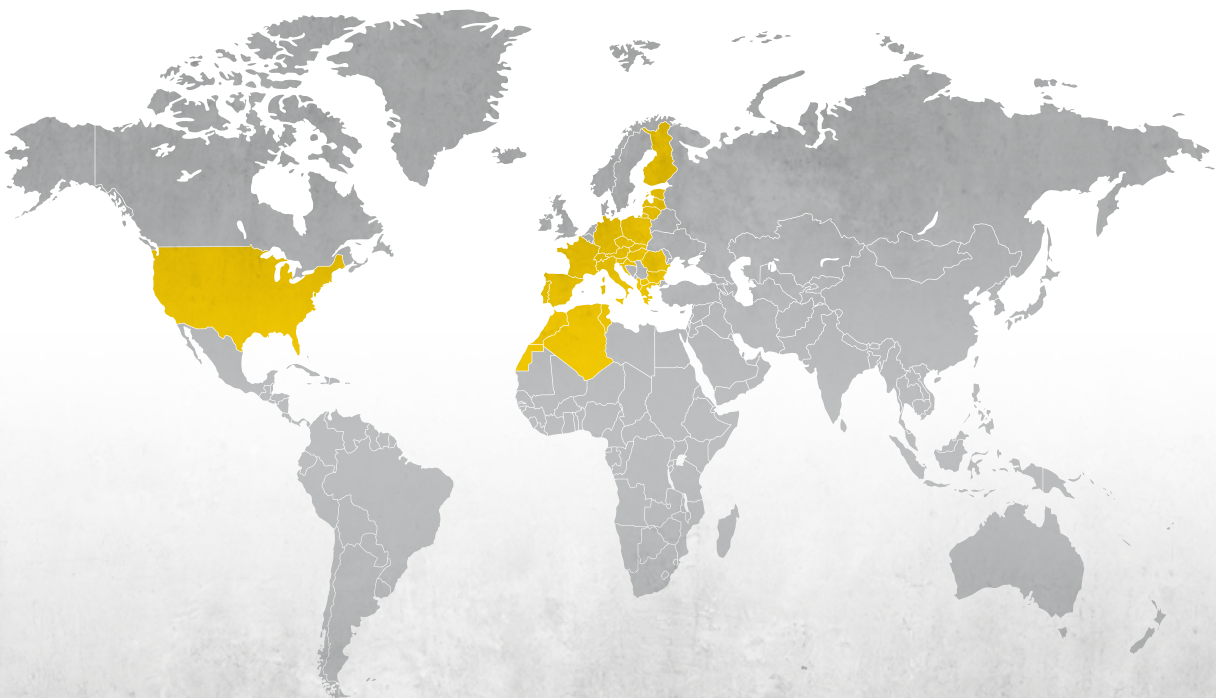
info@sunballast.com

COMMERCIAL CONSULTING

commerciale@sunballast.com

TECHNICAL SUPPORT

tecnico@sunballast.com



MADE TO LAST.

www.sunballast.com