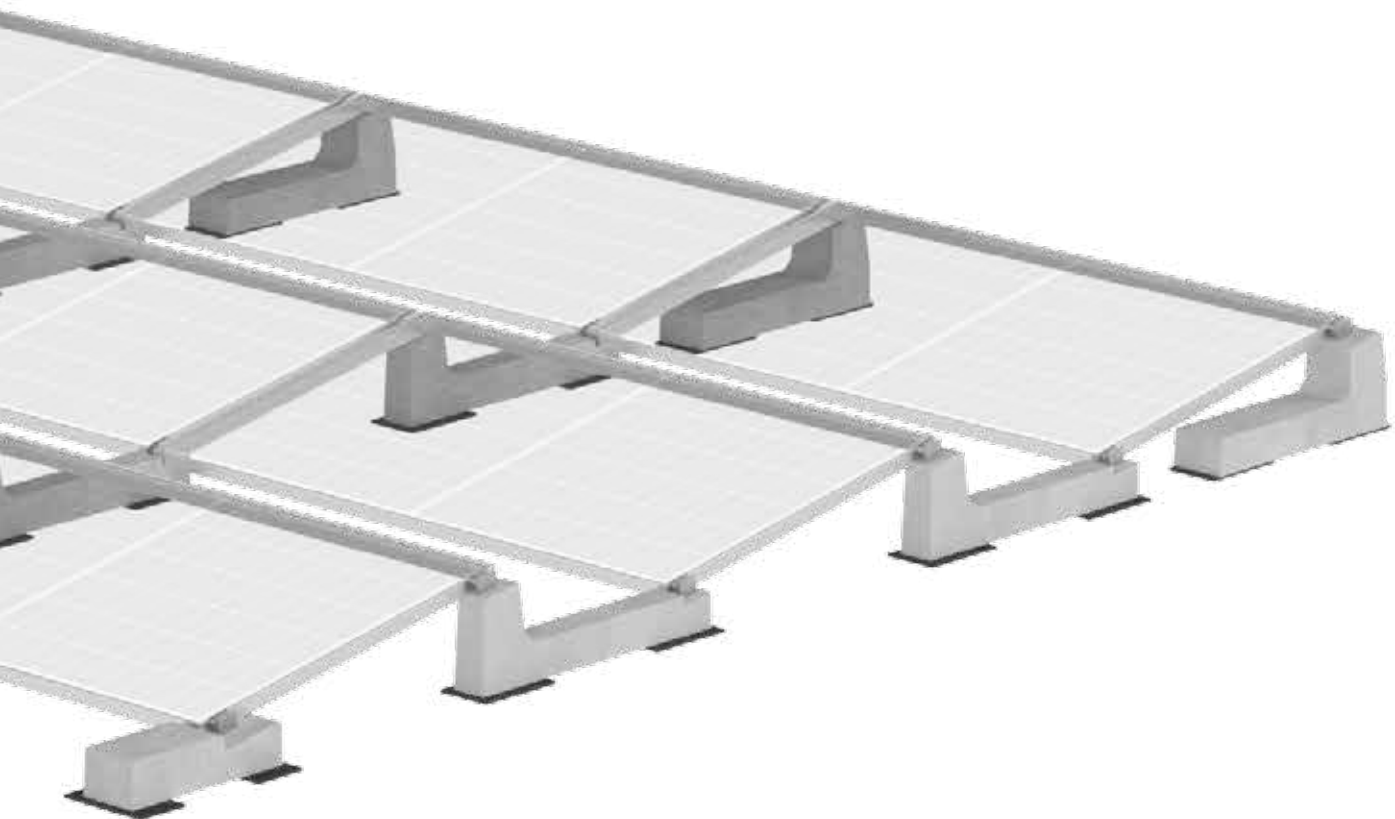




Made to last
Patented systems



since **2012**

THE IDEAL MOUNTING SYSTEM

FOR SOLAR PANELS
ON FLAT ROOFS

MADE T



TO LAST





OUR STORY



SINCE 2012 WE'VE BEEN LOOKING AT THE WORLD WITH A DESIRE TO IMPROVE IT, BY **PROVIDING STRAIGHTFORWARD, LONGLASTING SOLUTIONS** TO ANYONE WHO'S MADE THE ENERGY OF THE FUTURE THEIR BUSINESS.

Sun Ballast® was established by its CEO, **Maurizio Iannuzzi**, who has extensive experience in the installation of photovoltaic plants, and has been developing mounting systems for flat roofs for more than ten years to make installation operations easier and quicker.

This is our way of contributing to change, and giving safe, solid, tangible support to the energy of the future. **Support that is made to last.**

As a Benefit Corporation involved in dozens of social projects, Sun Ballast® sets the global standard in the field of solar mounting structures for flat roofs, and the company's innovative concrete ballasts support thousands of photovoltaic systems throughout the world.





THE IDEAL MOUNTING SYSTEM FOR FLAT ROOFS



OUR CONCRETE BALLASTS HAVE REVOLUTIONISED THE INDUSTRY OF SOLAR MOUNTING SYSTEMS, AND SET THE STANDARD FOR ALL PV SYSTEMS INSTALLED ON FLAT ROOFS.

Safe, solid and versatile Sun Ballast® systems combine support and ballast functions into one unique feature. This simplicity underpins the global success of solutions from Sun Ballast®.

Our ballasts are made with premium materials and do not require any drilling to affix them to roofs. Simply position them, secure the panel to the embedded fasteners and installation is complete.

Developed from Sun Ballast's passion for research and development of innovative real-world solutions, our systems are available in a wide range of tilt angles and make the installation of PV systems on flat roofs extremely quick, easy and safe.

MADE TO LAST



LONG LASTING SOLUTIONS



ALL BALLASTS PRODUCED BY SUN BALLAST® ARE MADE OF HIGH-STRENGTH CONCRETE, AND CONTAIN FASTENERS AND A SPECIAL METAL CORE. BECAUSE STRENGTH ISN'T OPTIONAL

Premium quality raw materials and processes.

Ballasts produced by Sun Ballast® are made of C32/40 concrete and are resistant to any type of cracking or corrosion.

The metal core within the structure provides extra resistance to mechanical strain, and the M8 threaded inserts enable panels to be secured even faster.

Sun Ballast® systems are tested in a wind tunnel and climatic chamber, and ensure a perfect balance between sturdiness, roof load and wind resistance.

Guaranteed for life, delivering reliable performance every time.



RESISTING



THE WIND

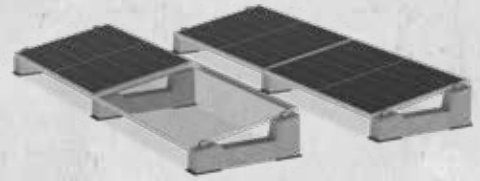
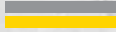
INDEX OF SUN BALLAST® SYSTEMS

1

Single-Row



Page 16



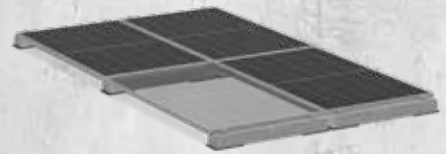
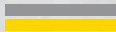
Simple, fast and versatile: the Single-Row system is available in a wide range of models, and allows modules to be positioned vertically, horizontally or with East-West orientation by freely modulating the distance between rows.

2

Zero



Page 18



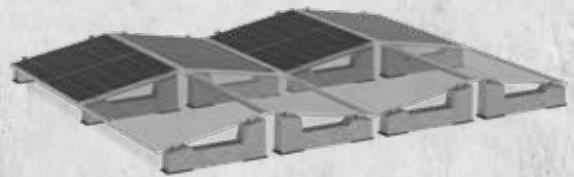
Flexible mounting, adjustable height: the Zero system allows modules to be fixed on both sides while optimising available space and the visual impact of the system.

3

Est-West



Page 20



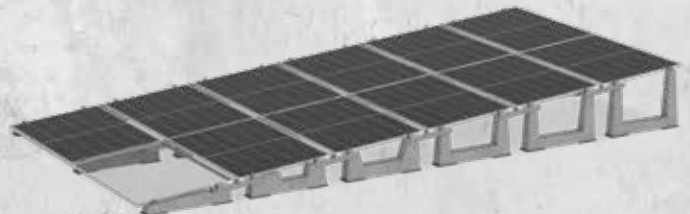
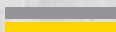
Simple, stable, and modular: the East-West system can be configured with all ballast ranges and allows you to optimize available space while ensuring stability and wind resistance.

4

Sail



Page 22



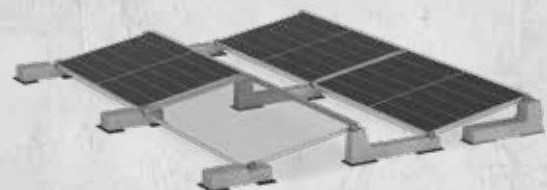
More power in less space: the Sail system allows up to three or six rows of ballasts to be placed, maximizing the entire flat roof area.

5

Connect



Page 26



Low load, high strength: the Connect system combines each PV ballast into a single grid, reducing the load on flat roofs and increasing wind resistance.

LARGE-SIZE MODULES

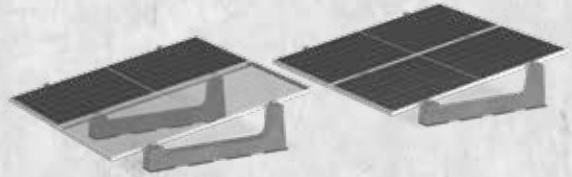
6

Mono-XL



Page 28

Quick, strong, flexible: the Mono-XL system allows for the vertical mounting of large modules, modulating the distance between rows and ensuring quick and secure placement.



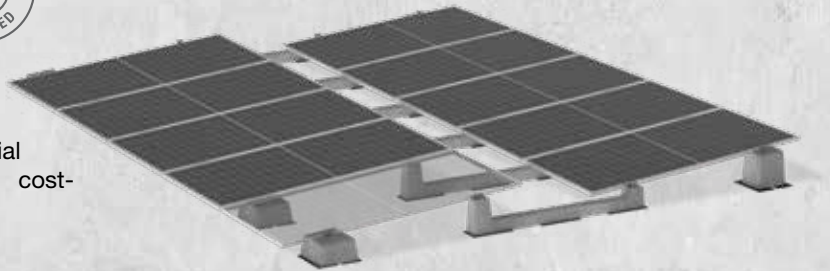
7

Industrial-XL®



Page 30

Safe, solid and cost-effective: the Industrial-XL® system is dedicated for large panels used for commercial installations and provides safety, tightness and cost-effectiveness.



8

EasyWest®



Page 32

Solid, universal, ultra-light: the EasyWest® lattice system minimizes roof load and provides panels of any size with exceptionally high wind resistance.



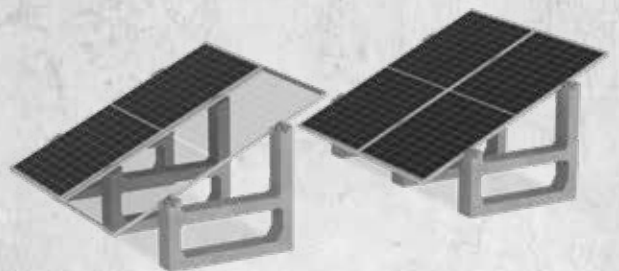
9

Big Ballast



Page 34

Stable and high-performing: Big Ballast is the ideal ground-mount ballast even for large modules, with a 25° tilt and vertical installation that ensures stability, quick assembly, and easy maintenance of the ground beneath the panels.



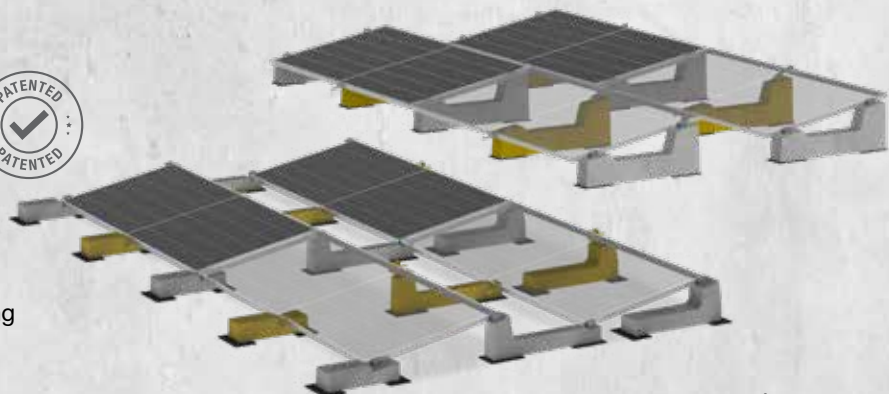
10

No-Flex®



Page 36

Maximum hold, zero flex: compatible with all Sun Ballast® systems, No-Flex® provides large panels with two additional support points, ensuring the highest level of stability and resistance.



INDEX OF SUN BALLAST® ACCESSORIES

1

Page 40

Central Clamp

Universal
central clamp kit
in aluminum,
stainless steel screw
M8x50 mm



2

Page 40

End Clamp

Universal
end clamp kit
in aluminum,
stainless steel screw
M8x50 mm



3

Page 40

EasyWest® Peak/Valley Clamp

Kit EasyWest®
Peak/Valley Clamp
in aluminum,
stainless steel screw
M8x50 mm

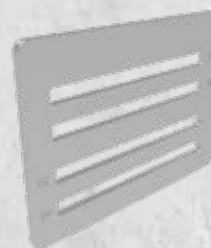


4

Page 40

EasyWest® Plate

EasyWest®
terminal plate
in aluminum



5

Page 41

PowerClamp® Clamp

PowerClamp® kit
in stainless steel
with M8x50



6

Page 41

PowerClamp® Plate

PowerClamp®
terminal plate
in stainless steel



7

Page 41

PowerClamp® EasyWest® Peak

PowerClamp®
EasyWest® Peak
Clamp kit
in stainless steel
with M8x50



8

Page 41

PowerClamp® EasyWest® Valley

PowerClamp®
EasyWest® Valley
Clamp kit
in stainless steel
with M8x50



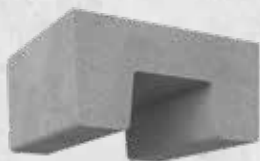
9

Page 39

U-Block



Additional weight
350 x 300 x 170 mm
30 Kg



U-Block XS



Additional weight
350 x 150 x 170 mm
15 Kg



10

Page 40

Rubber mat



Rubber mat
non-fire-propagating
8 mm thick, cut 250x150 mm



Rubber mat



Rubber mat
for Industrial-XL®
system non-fire-propagating
8 mm thick, cut 380x180 mm



11

Page 36

No-Flex® Connect System



No-Flex® Connect kit
Steel plate, M8 cage nut,
screw and washer



No-Flex® Single-row System



Single-row Connect kit
Steel plate, M8 cage nut,
screw and washer



12

Page 38

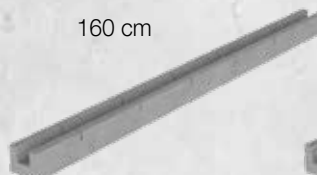
Cablowind®



95 cm

160 cm

185 cm



SINGLE-ROW



SINGLE-ROW

1

SIMPLE,
FAST, AND
VERSATILE



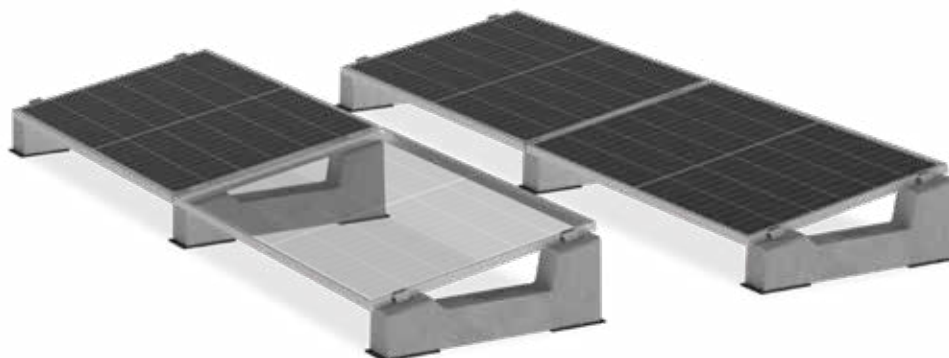
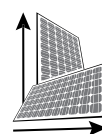
The Single-row system is a simple and extremely versatile solution: available in a wide range of tilt options from 3° to 30°, the ballasts allow panels to be fixed vertically, horizontally, or with East-West orientation, freely modulating the distance between rows and ensuring quick and easy installation, even in the presence of obstacles.

TILTS



3° 5° 10° 15° 20° 30°

VERTICAL
HORIZONTAL





ZERO

2

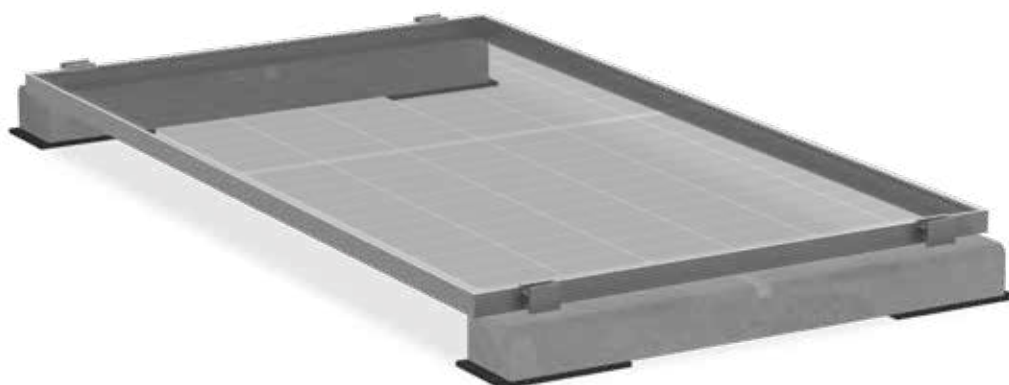
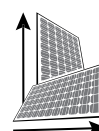
LOW LANDSCAPE IMPACT



Equipped with high wind resistance, the structures of the Zero system make it possible to effectively manage landscape constraints, maximizing the available space and the aesthetic impact of the PV system.

The installation and design phases become much simpler: the structures allow the modules to be fixed on the long side and/or on the short side, either by connecting them into a single grid or by positioning them in single rows with variable height.

VERTICAL
HORIZONTAL



EAST-WEST



EST-WEST

3

SIMPLE,
STABLE AND
MODULAR



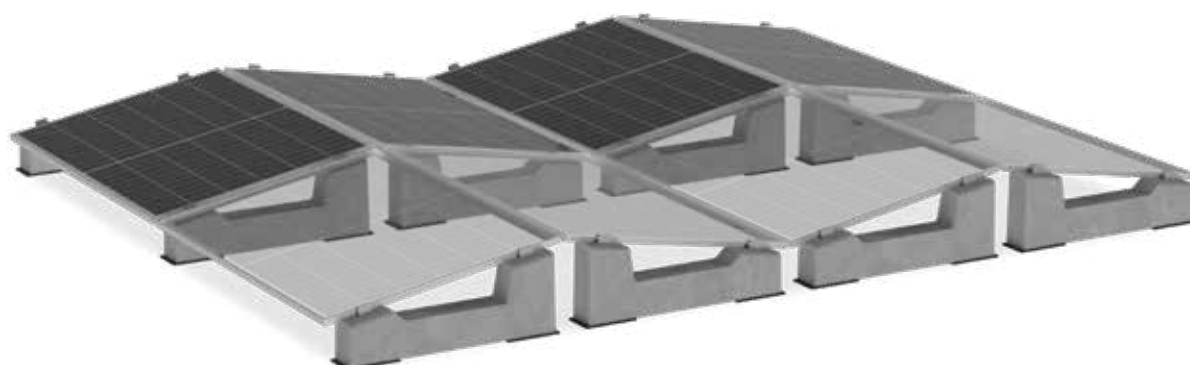
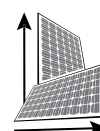
Optimized spaces, guaranteed stability: the East-West system allows panels to be mounted both horizontally and vertically, and is compatible with a wide range of ballasts from 3° to 30°. Easy and quick to install, the system makes the most of all available surfaces, quickly bypassing obstacles and ensuring high resistance to wind and snow loads.

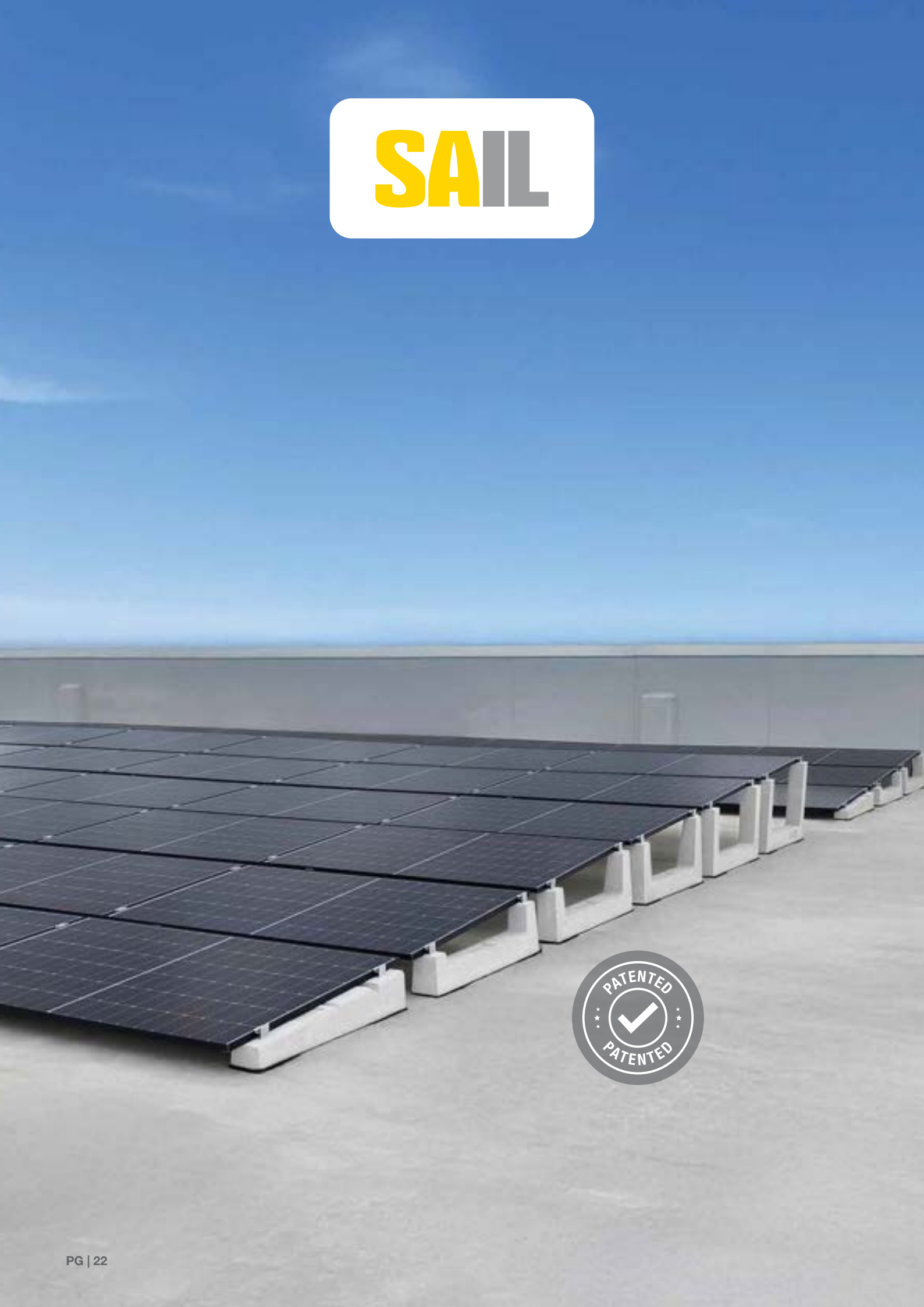
TILTS



3° 5° 10° 15° 20° 30°

VERTICALE
ORIZZONTALE

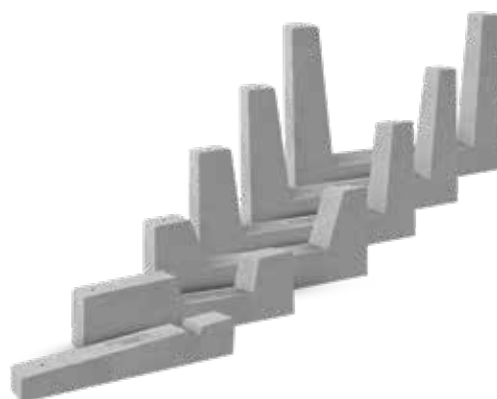




SAIL 5°

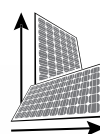
4

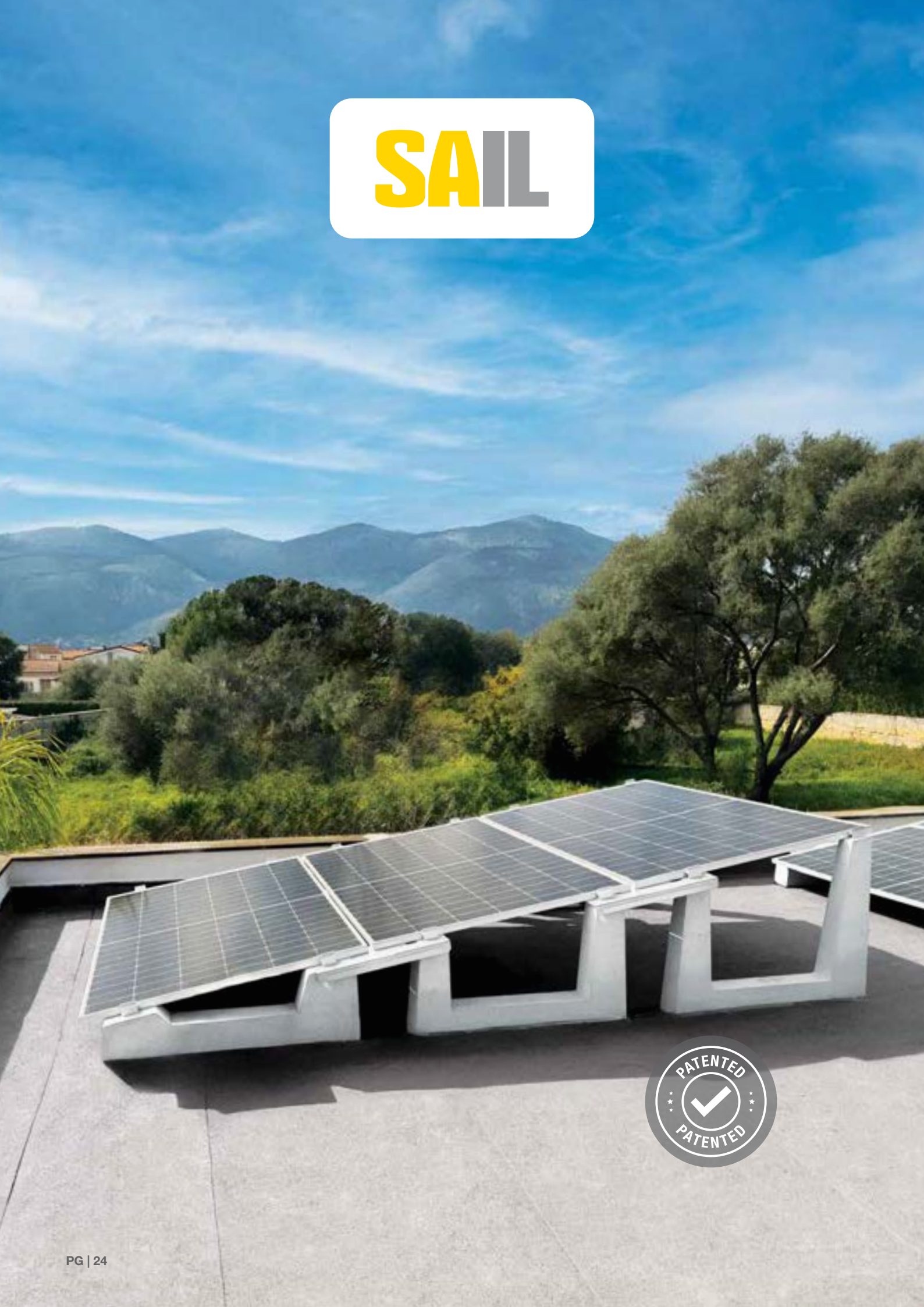
LOTS OF
ENERGY IN
LIMITED SPACE



Available in two versions of 5° and 10°, the Sail system allows you to position up to six consecutive rows of photovoltaic panels, adjusting the distance between the modules and optimising all the available space as much as possible. The ballasts can also be used in single rows, and ensure quick and easy obstacle management.

VERTICAL
HORIZONTAL

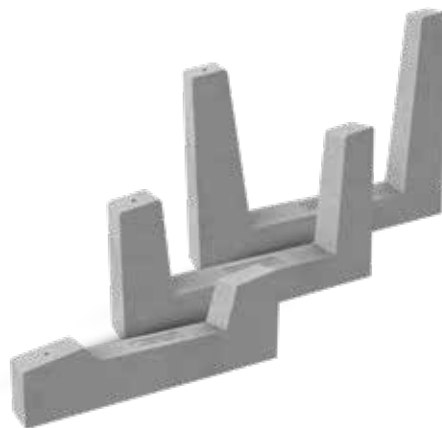




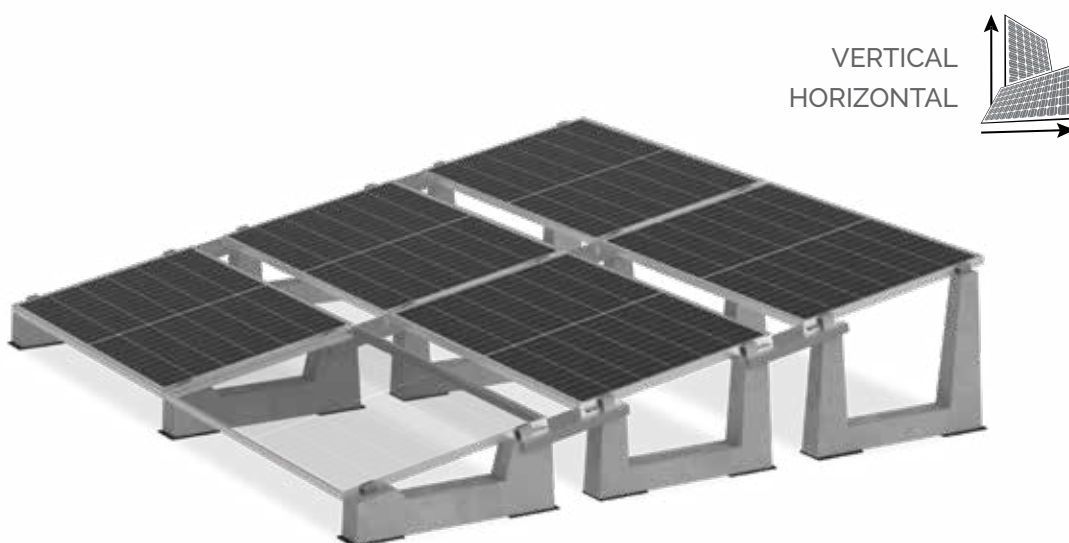
SAIL 10°

4

LOTS OF
ENERGY IN
LIMITED SPACE



Available in two versions of 5° and 10°, the Sail system allows you to position up to six consecutive rows of photovoltaic panels, adjusting the distance between the modules and optimising all the available space as much as possible. The ballasts can also be used in single rows, and ensure quick and easy obstacle management.



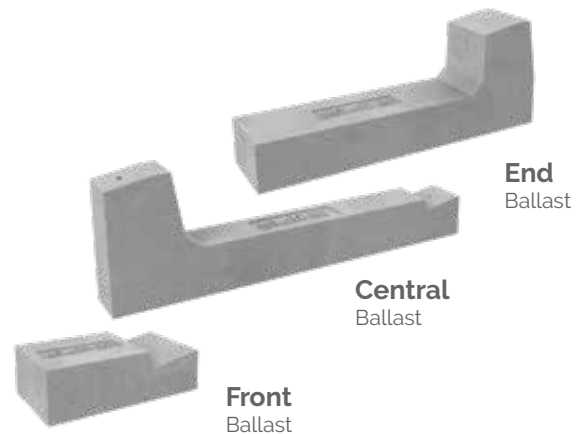
CONNECT



CONNECT

5

LOW LOAD,
HIGH
STRENGTH



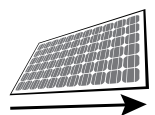
The perfect balance between resistance and lightness, the Connect system joins all ballasts into one grid, reducing roof load and transport costs, while distributing weight in a perfectly balanced fashion. The system is available with a wide range of tilt options and can be installed quickly and easily on any flat roof.

TILTS



5° 10° 15° 20° 30°

HORIZONTAL



MONOXL

NEW

For **large-size** modules



MONO-XL

6

QUICK,
STRONG,
FLEXIBLE



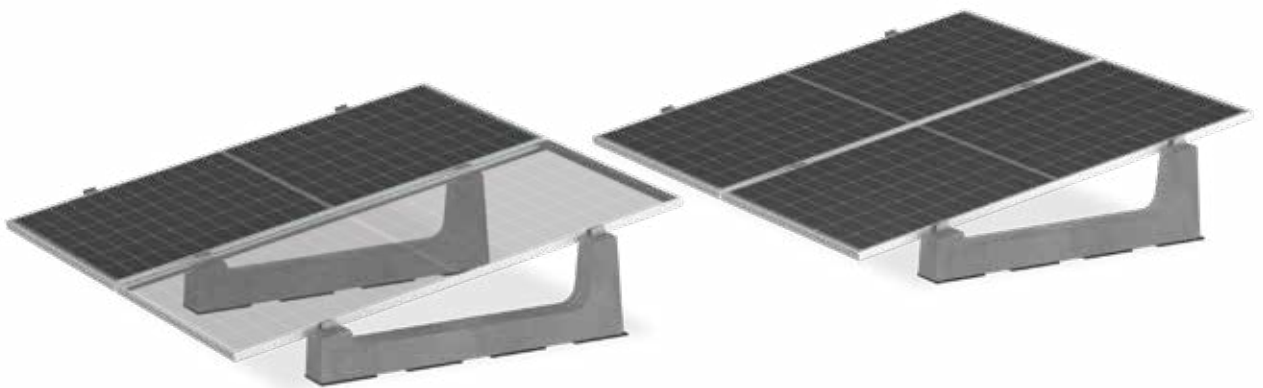
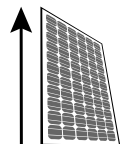
Available with 5° and 10° tilt options, Mono-XL ballasts offer large photovoltaic panels a simple and versatile solution: vertical fixation ensures strength and high stability levels for the modules. The ability to freely modulate the distance between rows ensures quick placement even in the presence of obstacles on the roof.

TILTS



5° **10°**

VERTICAL



INDUSTRI^{XL}

NEW

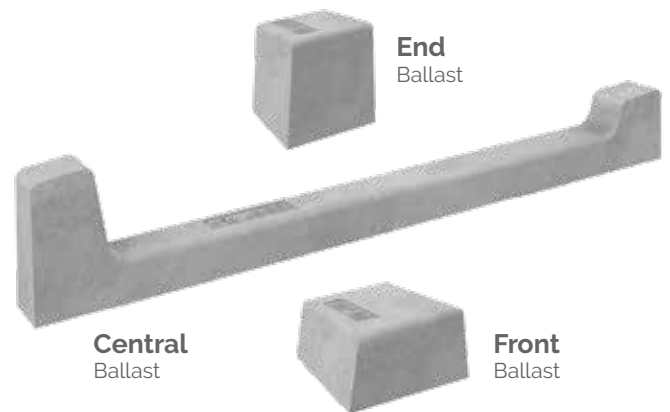
For **large-size** modules



INDUSTRIAL-XL®

7

SAFE,
SOLID,
COST-EFFECTIVE



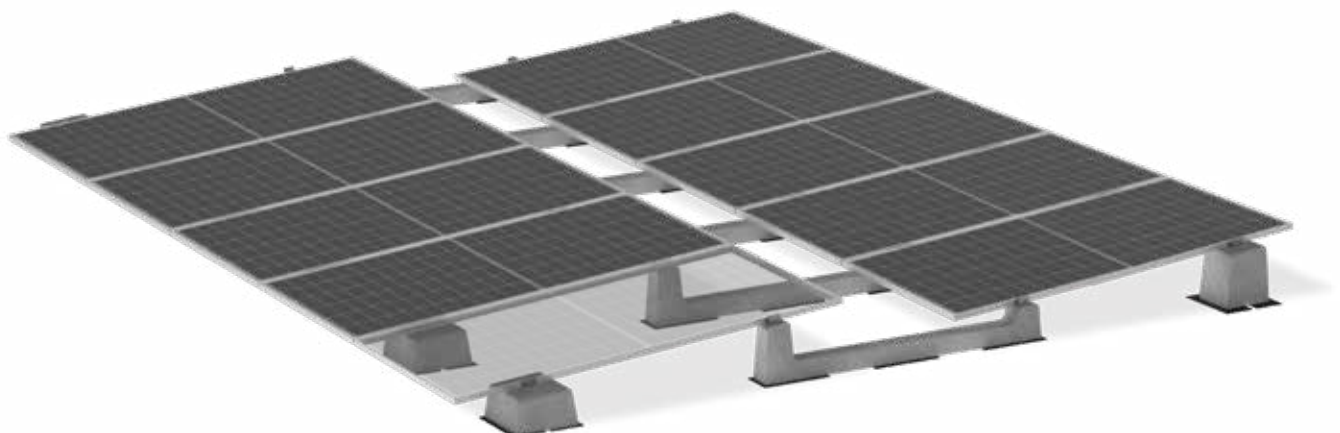
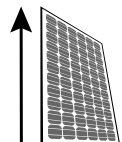
The Industrial-XL® system is designed for large panels used in large PV plants and offers maximum safety and reliability. A grid configuration with 5° vertical fastening ensures maximum wind resistance and compliance with all support specifications, while reducing costs per kW and roof load.

TILT



5°

VERTICAL



EASYWEST®

NEW

For **large-size** modules



EASYWEST®

8

LIGHTWEIGHT,
STABLE,
UNIVERSAL



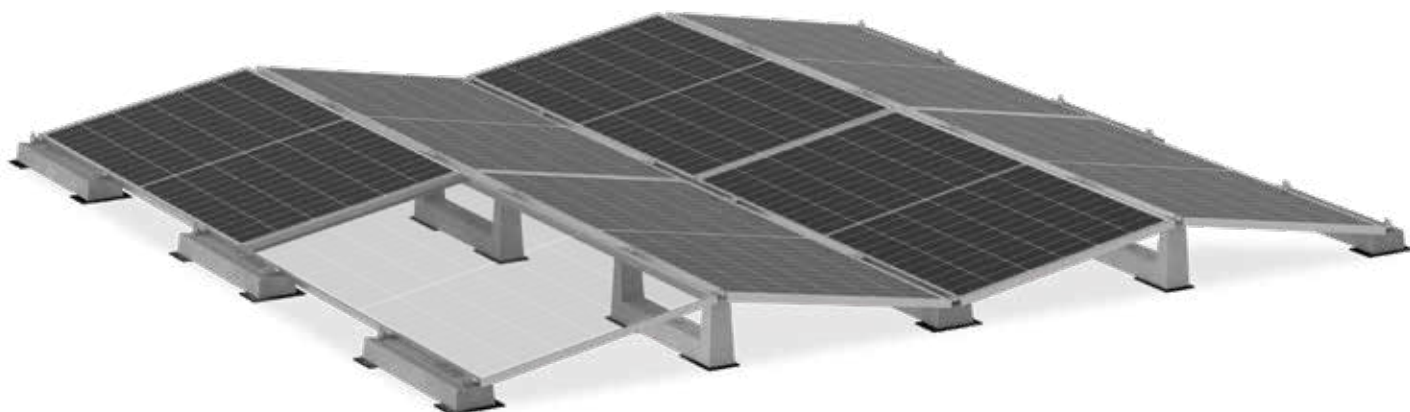
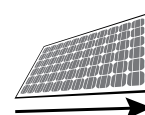
Low roof load, high wind resistance, and compatibility with any type of module: the EasyWest® system was designed to offer extremely lightweight, robust, and quick-to-mount reticular solution for East-West installations on flat roofs. Compatible with both standard solar panels and large modules.

TILT



10°

HORIZONTAL



BIG BALLAST

NEW

The new Sun Ballast® solution
for **ground-mounted PV systems**



BIG BALLAST

9

STABLE,
ANCHORABLE,
SECURELY FIXED
TO THE GROUND

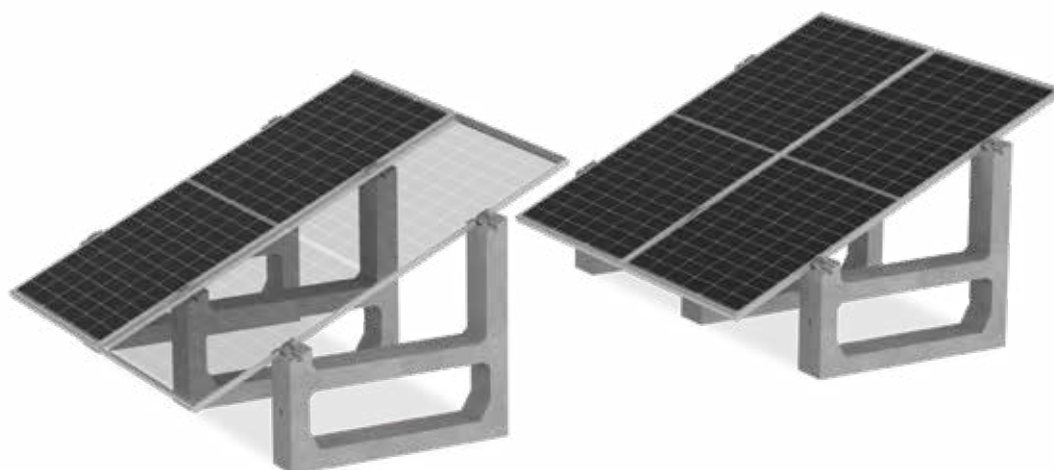
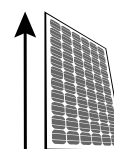


Big Ballast is the ballast specifically developed for ground-mounted systems, designed to offer superior performance and great versatility. With a 25-degree tilt and vertical installation, it perfectly accommodates large-size modules and more. Thanks to its height, Big Ballast allows easy grass cutting even beneath the lower part of the module. The tilt and vertical arrangement make module installation and the use of clamps simple, ensuring quick and precise assembly.

TILT

25°

VERTICAL



NO-FLEX[®]



NO-FLEX®

10

LONG LIFE FOR LARGE-SIZE PANELS



Sun Ballast® No-Flex® has 2 formidable strengths:

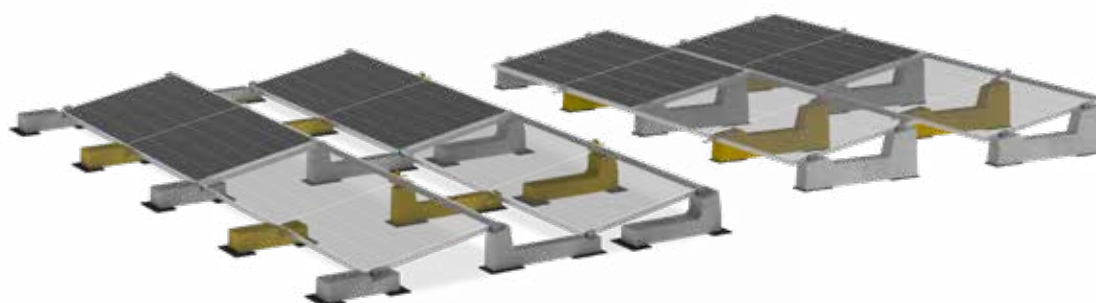
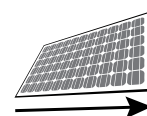
1. The addition of a central ballast to the module increases resistance to wind and snow loads.
2. It meets the support parameters required by module manufacturers and, at the same time, by supporting and securing the modules at 6 points instead of 4, it improves structural hold even under extreme and repeated stress over time.

TILTS



3° 5° 10° 15° 20° 30°

HORIZONTAL



ADDITIONAL COMPONENTS FOR THE SYSTEMS

CABLOWIND®

THE STRENGTH OF ORDER



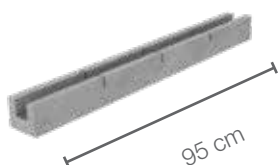
CABLOWIND® is the product that further enriches the range of accessories offered by Sun Ballast® and combines two distinct functions in a single element: a channel, which allows the correct housing of cables, and additional ballast, to ensure further stability for wind resistance of the photovoltaic system.



CABLOWIND®

95 cm

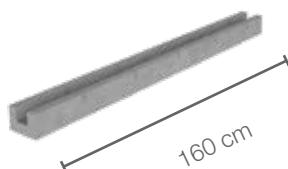
For vertical module installation



CABLOWIND®

160 cm

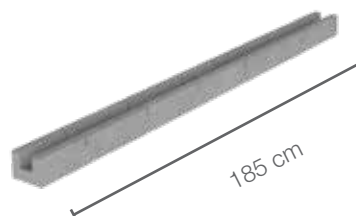
For horizontal module installation



CABLOWIND®

185 cm

For large horizontal module installation



U-BLOCK

ADDITIONAL WEIGHT

An additional U-Block weight, available in 15 and 30 kg versions, can easily and quickly be placed directly onto ballasts without the need for drilling, increasing the stability of the PV plant rapidly.

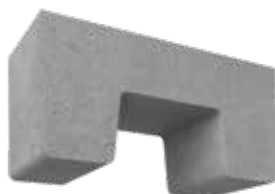


U-BLOCK XS

350 x 150 x 170 mm



15



U-BLOCK

350 x 300 x 170 mm



30



STANDARD ACCESSORIES

CLAMPS AND RUBBER MATS

Stable panels, intact surfaces: aluminium clamps enable panels to be secured quickly and safely, and roof membrane sheets placed under ballasts optimise their effectiveness by further protecting all support surfaces.

UNIVERSAL CENTRAL CLAMP

In aluminum, stainless steel screw M8x50 mm ● ●



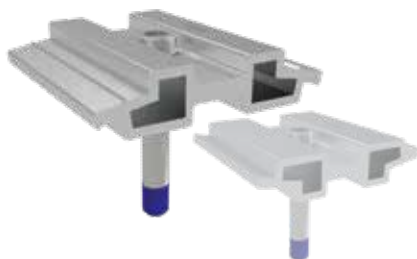
UNIVERSAL END CLAMP

In aluminum, stainless steel screw M8x50 mm ● ●



EASYWEST® PEAK/VALLEY CLAMP

In aluminum, stainless steel screw M8x50 mm



EASYWEST® TERMINAL PLATE

In aluminum



RUBBER MAT
non-fire-propagating,
8 mm thick, cut 380x180 mm



RUBBER MAT
non-fire-propagating,
8 mm thick, cut 250x150 mm



STANDARD ACCESSORIES

POWERCLAMP®



The PowerClamp® clip gives panels an even stronger and more durable fixation, providing the highest level of safety and making grounding operations much faster.

POWERCLAMP® CLAMP

in stainless steel with M8x50 screw



POWERCLAMP® TERMINAL PLATE

in stainless steel with M8x50 screw



POWERCLAMP® EASYWEST® PEAK

in stainless steel with M8x40 screw



POWERCLAMP® EASYWEST® VALLEY

in stainless steel with M8x40 screw



INSTALLATION SURFACES



All Sun Ballast® solutions enable photovoltaic plants to be implemented on any type of flat surface, from small tiled roofing on homes and blocks of flats through to large roofs with membranes on industrial buildings.

The absence of fastening slots, along with a wide range of height and tilt options, makes the ballasts extremely versatile, and enables fast, simple and safe installation on all types of roofing.



MEMBRANES



Membranes give many buildings a high level of protection and, thanks to the absence of penetrations, the ballasts made by Sun Ballast® safely retain all of their waterproofing properties.



FLOORING



As well as there being no need for penetrations, the ballasts are placed on protective rubber membrane sheets, ensuring a precise installation with no scratches, even on the most delicate surfaces.



GRAVEL

The ballasts can be placed directly onto gravel and the underlying roofing, ensuring fast, simple and safe installation.



GREEN ROOFS

Sun Ballast® has ideal solutions for any type of vegetation. The ballasts are not liable to corrosion, and thanks to the adjustable height from the ground, they can give excellent protection against direct light and bad weather.



GROUND

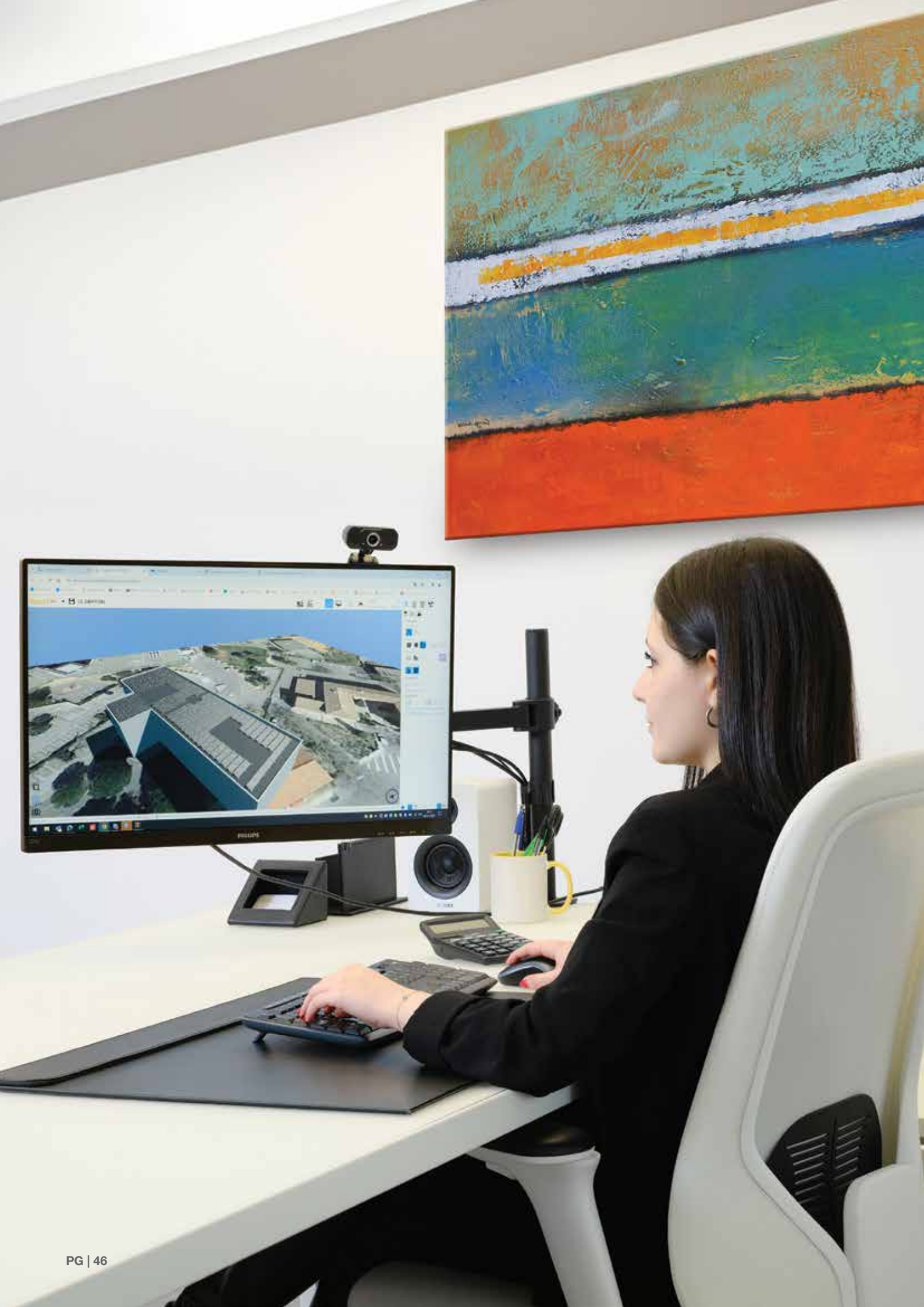
Once some basic preparations have been made for ground installation, the ballasts reduce installation times and ensure a high level of stability and wind resistance.



SOLID AS M



MOUNTAINS



FULL SUPPORT FROM DESIGN THROUGH TO INSTALLATION



THE SUN BALLAST® TECHNICAL SERVICE
ENSURES THAT ALL CUSTOMERS
HAVE FAST, FREE ASSISTANCE
IN ALL PV PLANT IMPLEMENTATION PHASES.
GUARANTEED SAFETY, EXPERTISE AND QUALITY.

Fast, free and professional - the Sun Ballast® service
provides comprehensive support from the initial design phase
until the last clamp is secured.

Customers benefit from ongoing support which provides calculations
and practical tips for using the configurator and all technical documentation
useful for implementing solid, safe and reliable photovoltaic plants.

With over 20 professionals, the Sun Ballast® technical department produces
thousands of technical reports every day, fully supporting installers, designers,
EPCs and distributors all over the world.

MADE TO LAST



INTERNATIONAL DISTRIBUTION NETWORK



QUICK INSTALLATION, QUICK DELIVERY
THE SUN BALLAST® DISTRIBUTION NETWORK
HAS DOZENS OF INTERNATIONAL PARTNERS,
AND BALLASTS ARE AVAILABLE IN OVER
40 COUNTRIES THROUGHOUT THE WORLD.

Quality and simplicity, plus ongoing availability and quick delivery - providing customers with professional support also means ensuring a commercial service and logistics that are quick, efficient and punctual.

To achieve this, Sun Ballast® ensures that all partners have a team of operators dedicated to providing ongoing support throughout the purchasing phase, from when an estimate is requested through to delivery of the materials.

The Sun Ballast® distribution network has dozens of international partners to ensure a fast, reliable delivery service in over 40 countries throughout the world.



CONTACT US



INFORMATION AND INITIAL CONTACT



info@sunballast.com



+39 0522 960926

BUSINESS CONSULTATION



commerciale@sunballast.com



+39 0522 1750249

TECHNICAL SUPPORT



tecnico@sunballast.com



+39 0522 1750201

COMMUNICATION, EVENTS, PR

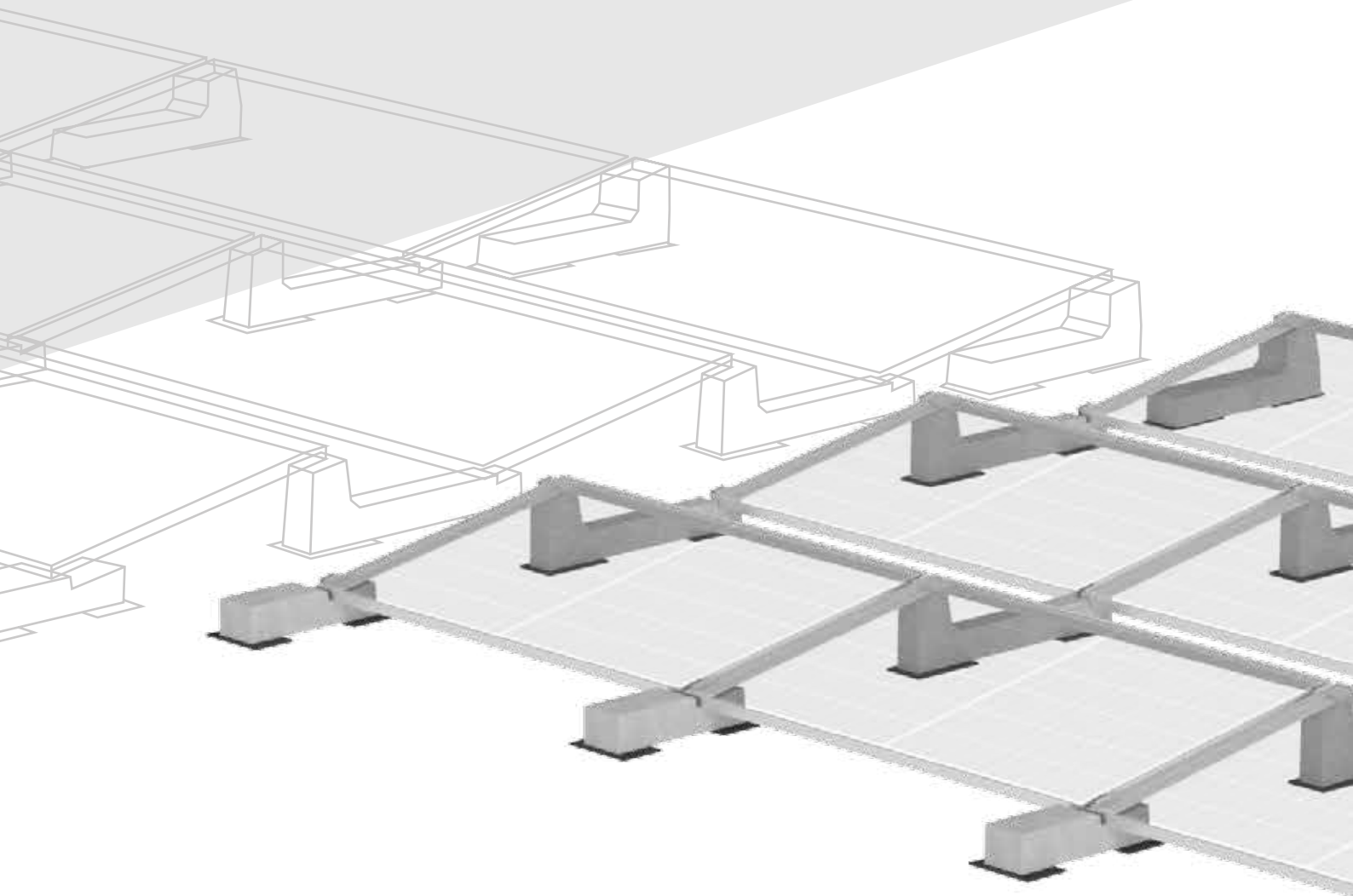


marketing@sunballast.com



+39 0522 1829902





BASIC S.R.L Benefit Corporation

Operations Office: Via Danubio, n.8 42124 Reggio Emilia (RE)
Registered Office: Contrada Monticello S.N.C 85042 Lagonegro (PZ)
VAT - 02557770357 - SDI: W7YVJK9

+39 0522 960926 | www.sunballast.com | info@sunballast.com

